



## SAILING INSTRUCTIONS Open Dutch Championship

Efsix, Sailhorse and Spanker class

Organised by **WV Braassemermeer**

under the auspices of the Royal Netherlands Watersport Association (RNWA)

from 17 to 19 september (inclusive) 2021

location: Roelofarendsveen

---

The notation '[NP]' in a rule means that a boat may not protest another boat for breaking that rule. This changes RRS 60.1(a).

### 1. RULES

- 1.1 The event is governed by the rules as defined in *The Racing Rules of Sailing (RRS)*.
- 1.2 The following RRS rules are changed: 28, 35, 40, 62.1 (a), A5.1, A5.2, A10.
- 1.3 All competitors and support persons must adhere to the corona rules of the Dutch government for the for the rules see <https://www.government.nl/topics/coronavirus-covid-19>.
- 1.4 [DP] Competitors and support persons shall comply with any reasonable request from an event official. Failure to comply may be misconduct. - Reasonable actions by event officials to implement COVID-19 guidance, protocols or legislation, even if they later prove to have been unnecessary, are not improper actions or omissions.

### 2 CHANGES TO SAILING INSTRUCTIONS

- 2.1 Any change to the sailing instructions will be posted before 0900 on the day it will take effect, except that any change to the schedule of races will be posted by 2000 on the day before it will take effect.


### 3 COMMUNICATIONS WITH COMPETITORS

- 3.1 Notices to competitors will be posted on the official notice board located at the regatta office.
- 3.2 The race office is located at the following address:  
WV Braassemermeer, Noorderhem 2, 2371 EC Roelofarendsveen.  
Phone: +31(0)71-331 2326

### 4 [DP] CODE OF CONDUCT

- 4.1 Competitors and support persons shall comply with reasonable requests from race officials.
- 4.2 Competitors and support persons shall handle any equipment by the organizing authority with care, seamanship, in accordance with any instructions for its use and without interfering with its functionality.

### 5 SIGNALS MADE ASHORE

- 5.1 Signals made ashore will be displayed at on or near the signal mast in front of the clubhouse of the WV Braassemermeer.
- 5.2 When flag AP  is displayed ashore, '1 minute' is replaced with 'not less than 30 minutes' in the race signal AP.

### 6 SCHEDULE OF RACES

- 6.1 The scheduled time of the warning signal for the first race and first class is as followed:

Date	Warning Signal of the first race
Friday 17th September 2021	12:25 hrs.
Saturday 18th September 2021	09:55 hrs.
Sunday 19th September 2021	09:55 hrs.



6.2 Number of Scheduled races:

Date	Efsix	Spanker	Sailhorse
Friday 17th September 2021	3	3	-
Saturday 18th September 2021	4	4	4
Sunday 19th September 2021	3	3	3

- 6.3 Starting sequence:      Class 1 Spanker  
                                     Class 2 Efsix  
                                     Class 3 Sailhorse

6.4 The race committee may change the starting sequence.



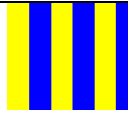
6.4 One extra race per day may be sailed, provided that no class becomes more than one race ahead of schedule and the change is made according to SI 2.1.

6.5 To alert boats that a race or sequence of races will begin soon, the orange starting line flag will be displayed with one sound at least five minutes before a warning signal is made.

6.6 On the last scheduled day of racing no warning signal will be made after 15:00 hrs, unless there is no valid championship, in that case the race committee can decide to start until 17:00 hrs.

**7 CLASS FLAGS**

7.1 The Class flags are:

Spanker	E	
Efsix	F	
Sailhorse	G	

**8 RACING AREA**

8.1 Addendum A shows the location of the racing area.

**9 COURSES**

9.1 The diagram(s) in SI Addendum B show(s) the courses, including the approximate angles between legs, the order in which marks are to be passed, and the side on which each mark is to be left

9.2 No later than 4 minutes before the start, the race committee signal boat will display the course to be sailed. The course to be sailed will be displayed on a white board with black numbers 1, 2, 3, 4 or 5.

**10 MARKS**

10.1 Marks 1 and 3 are an orange / white cylindrical shaped buoy. Mark 2 and 4 are a black / white cylindrical shaped buoy. Mark 5 is a red round shaped buoy.

10.2 The starting marks will be the Race Committee signal boat at the starboard end flying an orange flag on the main mast. On the port side of the starting line will be a dan buoy displaying an orange flag.

10.3 The finishing marks will be the Race Committee signal boat at the starboard end flying a blue flag on the aft of the ship. On the port side of the starting line will be a dan buoy displaying an orange flag.

10.4 A race committee vessel signaling a change of a leg of the course is a mark as provided in SI 13.2.

**11 SPARE**



## **12 THE START**

- 12.1 Races will be started by using RRS 26 with the warning signal given 5 minutes before the starting signal.
- 12.2 The starting line will be between a staff displaying an orange flag at the Race Committee signal boat at the starboard end, and an orange flag on a dan buoy at the port end.
- 12.3 An inner limit mark (ILM) may be used. If an ILM is used the string line as described in RRS 28.2 must not cross the line between the ILM and the staff on the committee signal boat displaying the orange flag. Mark ILM is a starting mark as prescribed in the preamble to RRS, part 2, section C.
- 12.4 A boat that does not start within 4 minutes after her starting signal will be scored DNS without a Hearing. This changes RRS A5.1 and A5.2.

## **13 CHANGE OF THE NEXT LEG OF THE COURSE**

- 13.1 To change the next leg of the course, the race committee will move the original mark or the finishing line to a new position.
- 13.2 Except at a gate, boats shall pass between the race committee vessel signalling the change of the next leg and the nearby mark, leaving the mark to port and the race committee vessel to starboard. This changes RRS 28.

## **14\* THE FINISH**

- 14.1 The finishing line will be between a staff displaying a blue flag at the race committee boat at the starboard side and an orange flag at the dan buoy at the port side. Seen from the last buoy.

## **15 SPARE**

## **16 TIME LIMITS [AND TARGET TIMES]**

- 16.1 The mark 1 time limit is 25 minutes.
- 16.2 Target time for a race is 50 minutes.
- 16.3 If no boat has passed Mark 1 within the Mark 1 time limit the race will be abandoned.
- 16.4 Boats failing to finish within 15 minutes after the first boat sails the course and finishes will be scored Did Not Finish without a hearing. This changes RRS 35, A5.1 and A10.
- 16.5 Failure to meet the target time will not be grounds for redress. This changes RRS 62.1(a).

## **17 HEARING REQUESTS**

- 17.1 The protest time limit is 60 minutes after the last boat finishes the last race of the day or the race committee signals no more racing today, whichever is later. The time will be posted on the official notice board.
- 17.2 Hearing request forms are available at the race office.
- 17.3 Notices will be posted no later than 30 minutes after the protest time limit to inform competitors of hearings in which they are parties or named as witnesses. Hearings will be held in the protest room, beginning at the time posted.

## **18 [NP][DP] SAFETY REGULATIONS**

- 18.1 [DP] A boat that retires from a race shall notify the race committee at the first reasonable opportunity.
- 18.2 [DP] Competitors shall wear personal flotation devices at all times while afloat, except briefly while changing or adjusting clothing or personal equipment. This changes RRS 40.

## **19 REPLACEMENT OF CREW OR EQUIPMENT**

- 19.1 Substitution of competitors will not be allowed without prior written approval of the race committee. Replacement of the responsible person is not allowed.



**20 EQUIPMENT CHECKS AND MEASUREMENT CHECKS**

20.1 A boat or equipment may be inspected at any time for compliance with the class rules, notice of race and sailing instructions.

20.2 [DP] When instructed by a race official on the water, a boat shall proceed to a designated area for inspection.

**21 SPARE**

**22 OFFICIAL VESSELS**

22.1 Race committee boats will fly a RC flag.

**23 SPARE**

**24 TRASH DISPOSAL**

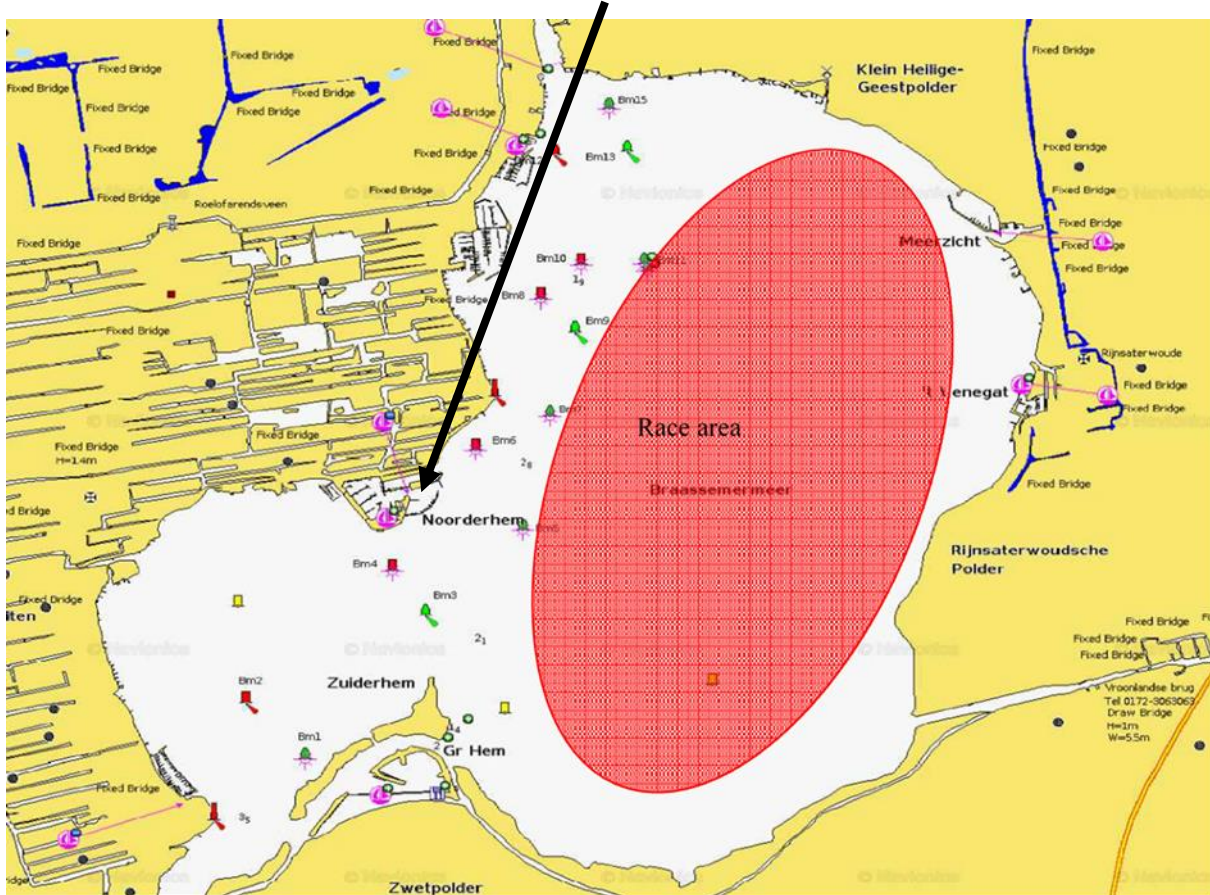
24.1 Trash may be placed aboard [official]lor [support persons] boats.

**25 ORGANISATION**

The race officer is : Marijke Hasselman  
The chairman of the protest committee is : \_\_\_\_\_  
The chairman of the technical committee is : \_\_\_\_\_

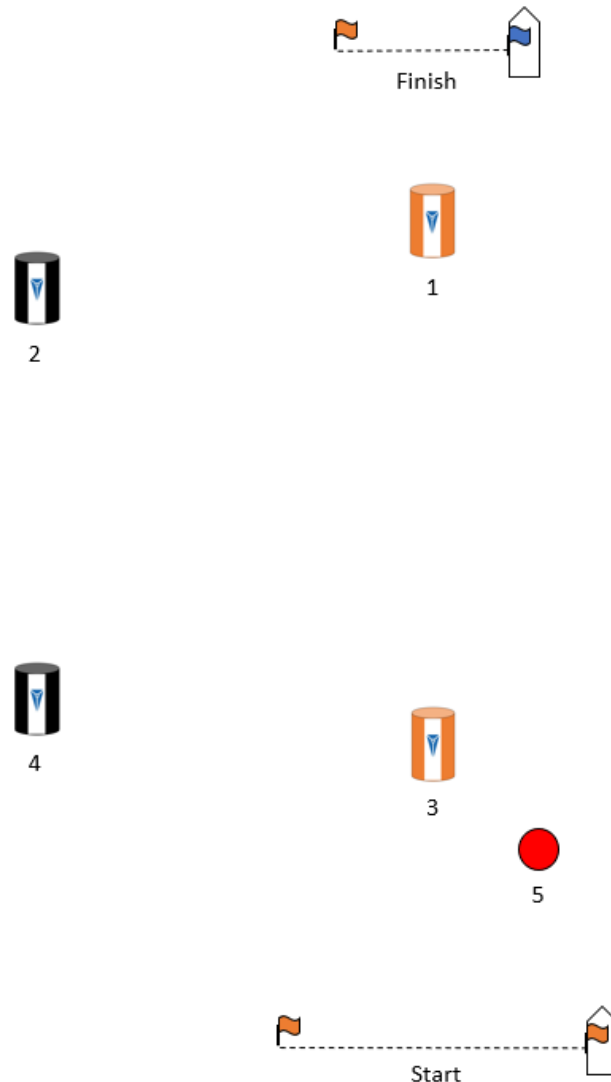


**Addendum A: the map of the location of the harbour.**





### Addendum B: The course



#### Outerloop:

- 1: Start, 1 (ps), 2 (ps), 4 (ps), 5 (ps), Finish
- 2: Start, 1 (ps), 2 (ps), 4 (ps), 2 (ps), 4 (ps), 5 (ps), Finish
- 3: Start, 1 (ps), 2 (ps), 4 (ps), 2 (ps), 4 (ps), 2 (ps), 4 (ps), 5 (ps), Finish

#### Innerloop:

- 4: Start, 1 (ps), 3 (ps), 1 (ps), 2 (ps), 4 (ps), 5 (ps), Finish
- 5: Start, 1 (ps), 3 (ps), 1 (ps), 3 (ps), 1 (ps), 2 (ps), 4 (ps), 5 (ps), Finish